

MOMENTS MATTER, ATTENDANCE COUNTS.

LEOMINSTER PRIMARY SCHOOL

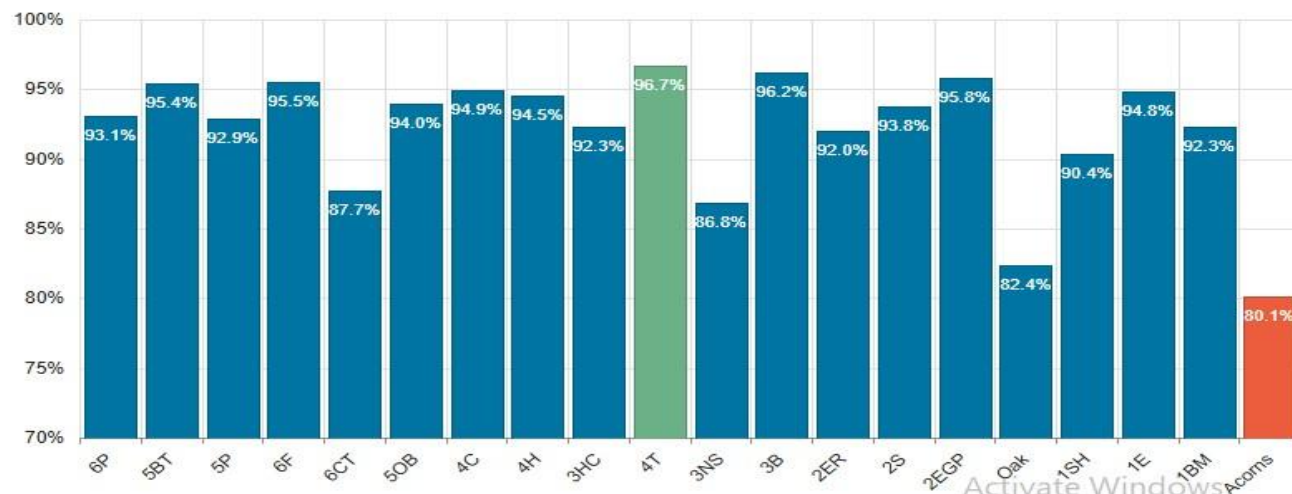
ATTENDANCE AUTUMN TERM

6TH – 16TH JANUARY 2026



Attendance 6th – 16th January 2026 **92.9 %**

We continue to improve this with all the interventions we have put in place.
We look forward to working with you all to ensure that your child is in school daily.





Attendance Awards – every 2 weeks

Teddy Bears will out every 2 weeks to the overall class winners for KS1 & KS2.

The Attendance Cup will be awarded to a class every two weeks to the highest achieved attendance in the whole school.

Tabitha Tiger - KS1

Leo Lion - KS2

KS1 Fortnightly Champions are: 95.8% 2EGP KS2

Fortnightly Champions are: 96.7% 4T



Punctuality

KS1 and KS2 gates will close at 8.50am.

Late arrivals after this time will need to go through the office to be signed in as late before going to their class.

Nursery gate will remain open until 9am, However reception children will be recorded as late if they arrive after 8.50am.



As well as missing valuable learning time, it can be very unsettling for a child who arrives late. Persistent lateness is detrimental to a child's education, and we monitor this very closely.

**MOMENTS
MATTER,
ATTENDANCE
COUNTS.**



Can we please remind parents/carers that you are required to contact the school before **9.30am** on the first day of your child's absence with full details of the reason your child is absent and each subsequent day of absence, in person, by email: admin@lps.hereford.sch.uk, by phone 01568 616919 or by the Bromcom MCAS App.

**MOMENTS
MATTER,
ATTENDANCE
COUNTS.**

We expect all pupils at Leominster Primary School to attend school as regularly as possible. Our ambition for every child is 100% attendance.

	Impact over 1 school year	Impact over 5 school years
100% Attendance	0 days missed	0 days missed
95% Attendance	9 days of absence 1 Week and 4 Days of learning lost	¼ year learning lost
90% Attendance	19 Days of Absence 3 Weeks and 4 Days of learning lost	½ year learning lost
85% Attendance	28 Days of Absence 5 Weeks and 3 Days of learning lost	¾ year learning lost
80% Attendance	38 Days of Absence 7 Weeks and 3 Days of learning lost	1 year learning lost
75% Attendance	47 Days of Absence 9 weeks and 1 day of learning lost	1 ¼ years learning lost

Medical Appointments

In line with our policy all medical appointments during school hours will need to be evidenced by an appointment card, letter, email or text confirmation.

This can be shown to the office staff or copies sent to: jkuegler@lps.hereford.sch.uk



If we cannot evidence the appointment, then the absence will be treated as unauthorised.

Please see the attached links that you may find useful:



[Free for families in Herefordshire & Worcestershire — Lumi Nova: Tales of Courage](#) – Digital therapy to help your child self-manage their worries.



[Home - Togetherness](#) - parents use the code **APPLEHERE**

Is my child too ill for school - [Is my child too ill for school? - NHS](#)

